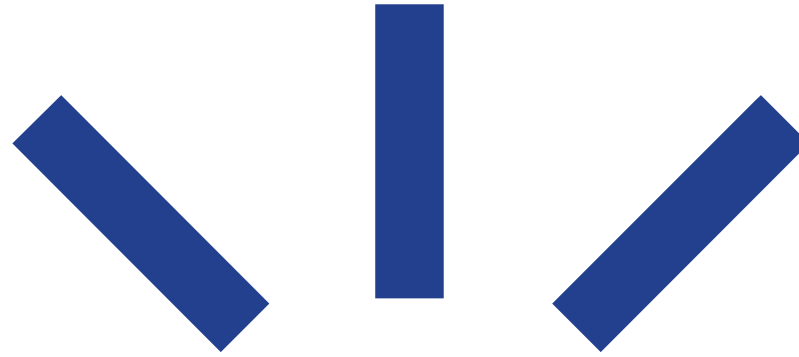


*Joint Health and ICT WG Meeting on Artificial Intelligence
Brussels, Belgium, April 11, 2019*



AI in knee osteoarthritis diagnostics

Simo Saarakkala

Professor of Biomedical Engineering

Research Unit of Medical Imaging, Physics and Technology (MIPT)

Faculty of Medicine, University of Oulu, Finland

Scientific Director

Infotech Oulu Focus Institute

University of Oulu, Finland



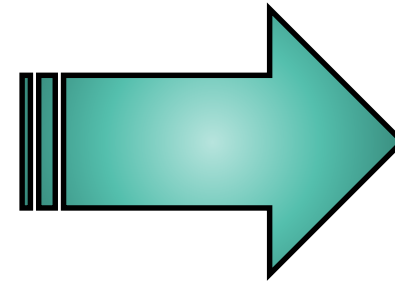
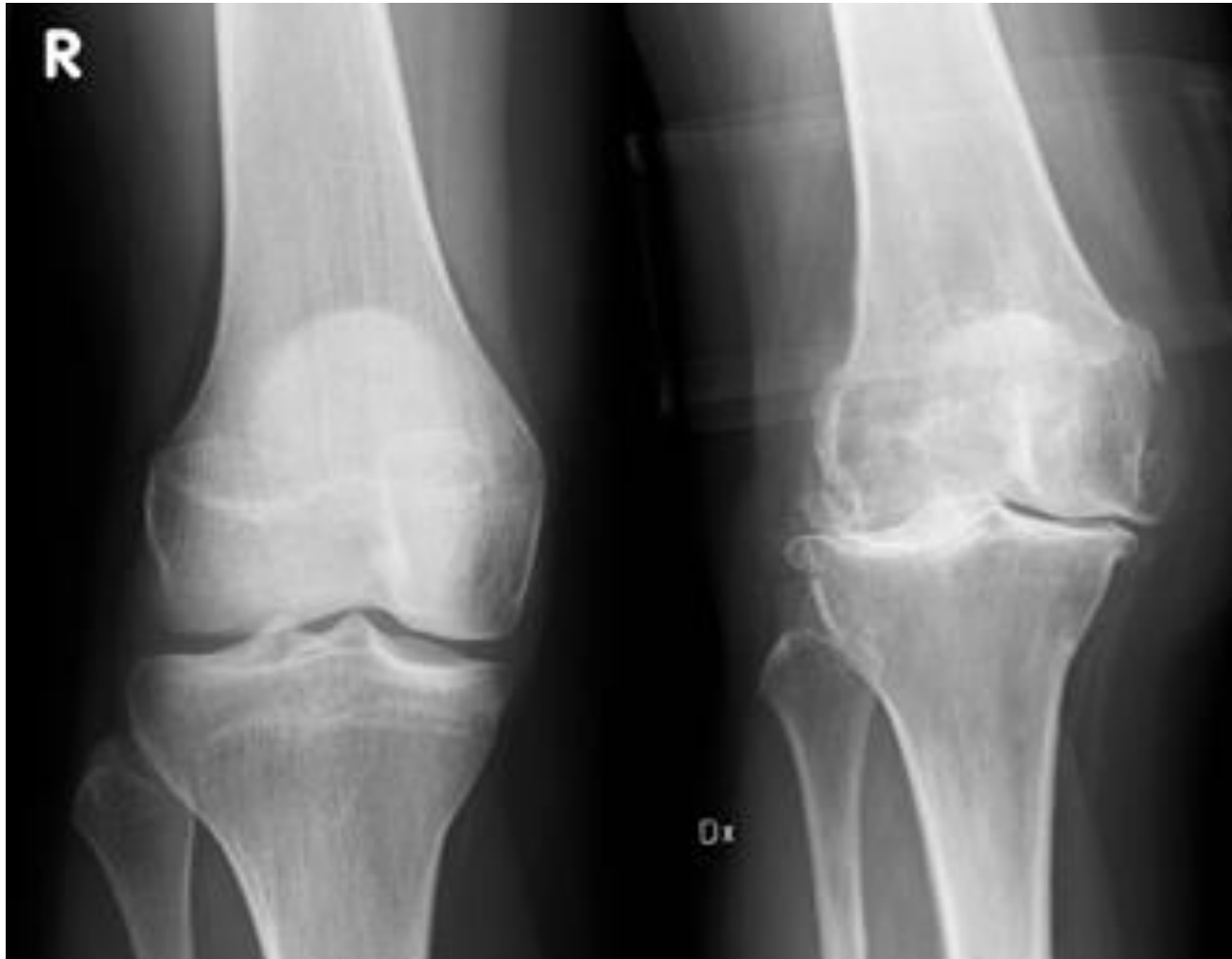
Osteoarthritis

- Most common musculoskeletal disease
- Current treatment options:
 - 1) Symptomatic relief
 - 2) Surgical interventions
- Significant societal relevance





Knee X-ray imaging

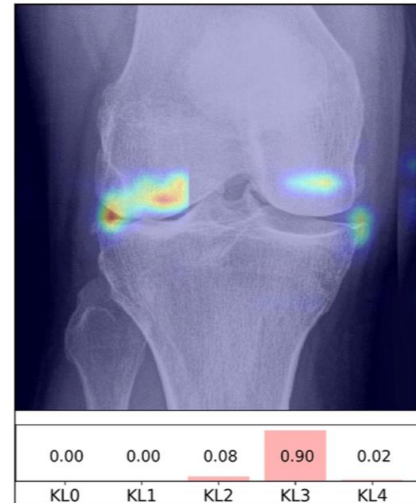
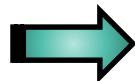
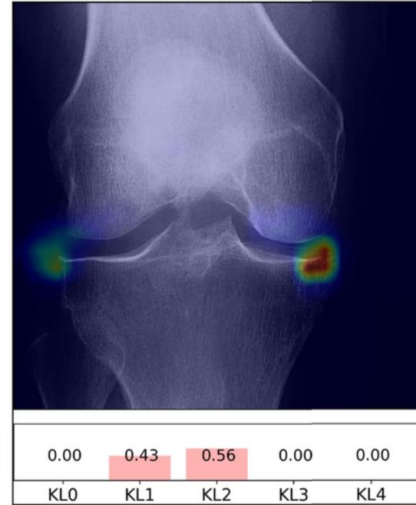
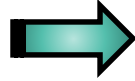


Severity ?
Progression ?

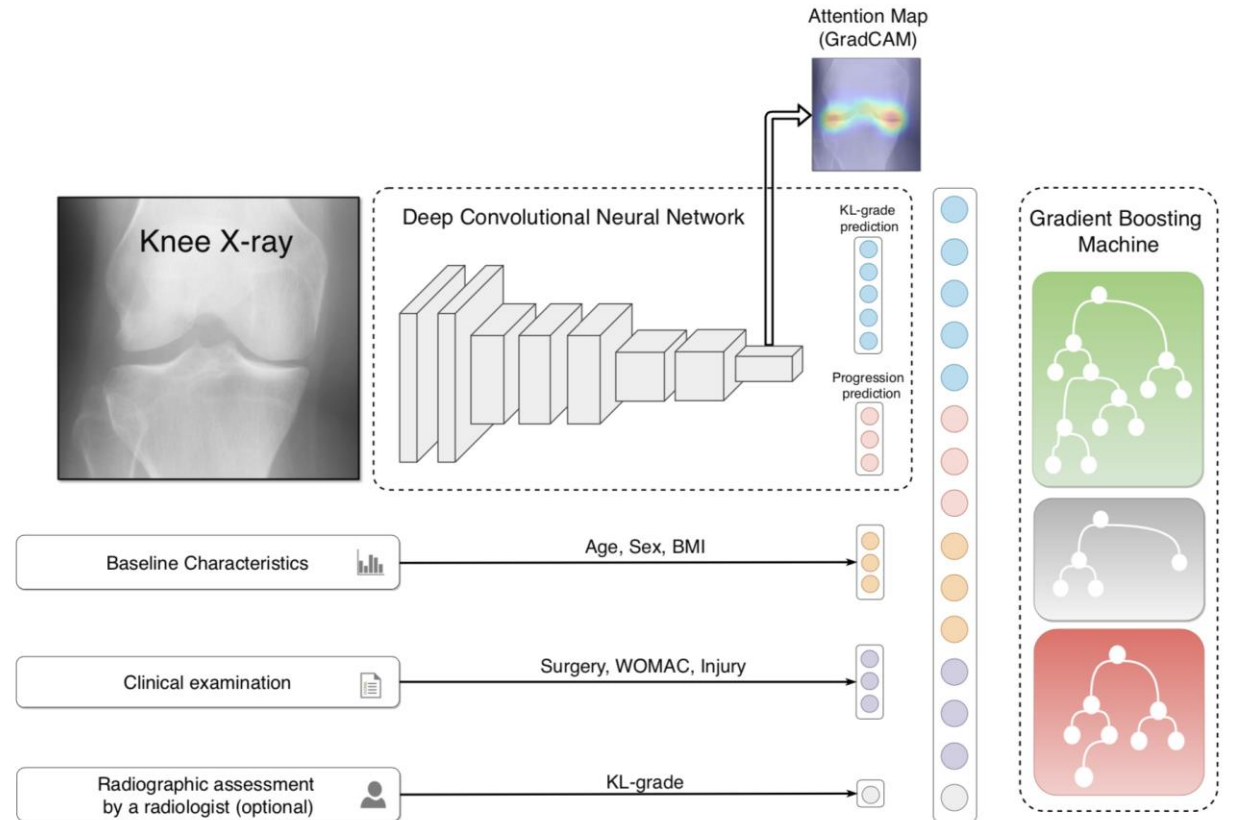


Knee X-ray imaging & AI

Diagnosis of severity



Prediction of progression





European Research Council
Established by the European Commission
Supporting top researchers from anywhere in the world



DIOS group (Diagnostics of Osteoarthritis)

www.mipt-oulu.fi/saarakkala-group

BUSINESS FINLAND



Group members:

Jérôme Thevenot, Ph.D., Post-Doctoral Fellow
Lassi Rieppo, Ph.D., Post-Doctoral Fellow
Mikko Finnilä, Ph.D., Post-Doctoral Fellow
Lauri Hautala, Ph.D., Post-Doctoral Researcher
Lauriane Janssen, Ph.D., Post-Doctoral Researcher

Sakari Karhula, M.Sc., Ph.D. Student
Joonas Oinas, M.Sc., Ph.D. Student
Alekssei Tiulpin, M.Sc., Ph.D. Student
Shuvashis Das Gupta, Ph.D. Student
Iida Kestilä, M.H.Sc., Ph.D. Student
Vesa Virtanen, M.H.Sc., Ph.D. Student
Simo Ojanen, M.Sc., Ph.D. Student

Tuomas Frondelius, Research Assistant
Sami Kauppinen, Research Assistant
Santeri Rytty, Research Assistant
Jesse Lohela, Research Assistant
Bijay Shakya, Research Assistant
Iivari Kanninen, Research Assistant
Laura Tervala, Research Assistant
Linda Rantamaa, Research Assistant
Terhimaria Kaski, Research Assistant
Ville Karjalainen, Research Assistant
Hanna Hautamäki, Research Assistant

Tarja Huhta, Laboratory Technician



SIGRID JUSELIUS

